

DYNAMCO PTY LTD

innovative vehicle solutions

Alarms

Immobilisers

Reversing
Solutions

Central Locking

Sensors

Remotes

Accessories

Product Catalogue – 21st Edition

Welcome

It gives me great pleasure to bring you Dynamco's 21st Edition of our product catalogue. Founded in 1987, the company has grown through continued focus on its core business of vehicle security and on our motto that "we take business personally" – essentially this translates to a focus on integrity and on long-term relationships with you, our customer.

Dynamco is a company passionate about its future and we are investing in growth by bringing our customers new and exciting products. Our company is diversifying steadily to include innovative and higher value solutions for vehicles as well as other environments.

Our investment in developing innovative wireless technology and re-inventing market segments like RV Security 'from the ground up' is already reaping rewards for our customers.

To our strong and loyal base of customers, thank you as always for your continued support and if you are one of our new customers, welcome aboard and we look forward to working with you long into the future.

Yours sincerely,

A handwritten signature in black ink, appearing to read 'Metlitzky', enclosed within a simple oval outline.

Steve Metlitzky
Chief Executive Officer, Dynamco

Corporate Information

Founded in 1987, Dynamco Australia has a proud history of providing innovative, high quality vehicle solutions. Building on our core automotive security business, Dynamco has diversified to bring unique vehicle products to the international market. We believe strongly that business success is based more on human relationships than technology and we take business personally.

Our Company

From small beginnings we have grown steadily to become one of the world's leading specialist companies in electronic vehicle solutions. Dynamco has a dedicated research and development team that is constantly focused on bringing innovative solutions to market. One of our core strengths is designing and customising systems to deliver increasingly sophisticated products, whilst retaining the balance of ease of use.

With our head office based in Perth, Western Australia and an Eastern states office in Sydney, we are one of the largest companies supplying the aftermarket with electronic vehicle solutions in Australia. Hundreds of thousands of motorists worldwide have learned to rely on the sophistication, reliability and effectiveness of our systems. Our North American operation based in Southern California, is at the forefront of our worldwide distribution network.

Automotive customers demand and rightfully expect high levels of quality and after-sales service. This has been a key focus of our company with a quality manufacturing capability in Asia supported by a strong base of aftermarket distribution and support partners.

Our Solutions

Dynamco's initial business was centred around innovative, high quality vehicle security solutions. This allowed us to become one of the leading providers in the Australasian market and a rapidly growing force in North America. With ever increasing expectations of automotive customers, Dynamco has diversified beyond security to bring a new range of solutions to our customers and distribution partners.

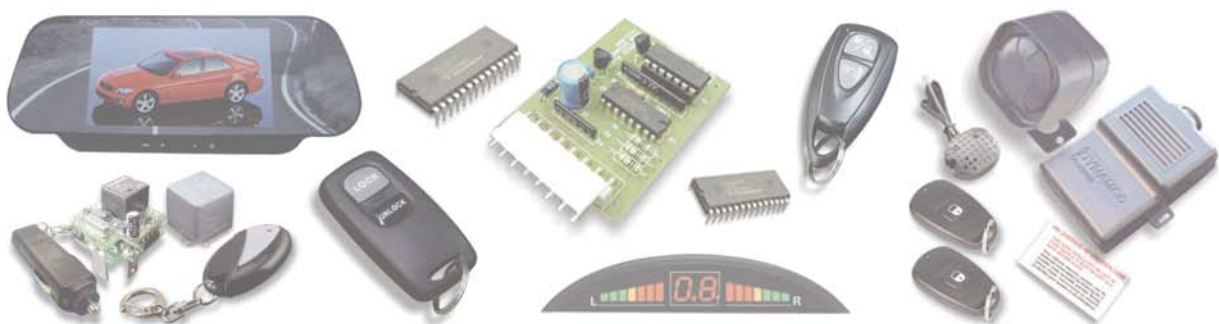
Adding intelligence to our products through software and wireless technology, we strive to deliver automotive products that are easier to use and provide tangible value to our customers.

People are key

Dynamco's core business is technology but our primary focus is on people and relationships. Our success to date as well as our future growth will continue to be based on this principle. We really do *take business personally*.

Work with us

With strong design, manufacture, distribution and support arms in Asia-Pacific, Dynamco is well positioned to bring your exciting vehicle products to market. We are also always on the lookout for extending distribution of our product range worldwide through high quality partners.



Contents

Welcome	2	Upgrade Alarms	11
		Factory Upgrade Alarm P485	11
Corporate Information	3	Mini Upgrade P180	11
Our Company	3	CAN Bus Upgrade	11
Our Solutions	3		
People are key	3	Central Locking	12
Work with us	3	Standard Central Locking Kit 4CL-001	12
		Remote Central Locking Kit 4CL-002	12
What's New	6	Keyless Entry Kit KE-CLR-TX90	12
Wireless Toolbox Alarm	6	Toyota 100 Series Central Locking Kit 4CL-004	12
Wireless RV Alarm	6		
Wireless Alarms and Immobilisers	6	Reversing Systems	13
CAN Bus	6	Reversing Sensor Kit (Display) SEN-003/4	13
SMS Pager	7	Reversing Sensor Kit (Buzzer) SEN-010	13
GPS Tracking	7	Trailer Sensor SEN-012	13
		Reversing Screen SCR-001	13
Immobilisers	8	Reversing Screen SCR-002	13
Touch Key Immobiliser P165	8	Reversing Camera CAM-001	14
Transponder Immobiliser (Hands Free) P205	8	Reversing Camera CAM-003	14
Remote Immobiliser P275	8	Reversing Camera CAM-004	14
Deluxe Remote Immobiliser P355	8		
		Remote Controls – Current	15
DIY Alarms and Immobilisers	9	Touch Key TOUKEY	15
Wireless DIY Alarm X3	9	Transponder TRAKEY	15
NoStart Relay NO-START-002	9	TX101 Remote (single button) REM-101	15
DIY Touch Key Immobiliser P120	9	TX111 Remote (two button) REM-111	15
Wireless Sensors	9	TX90 REM-090T	15
		TX74A REM-074	15
Alarms	10	TX90 REM-090	15
Remote Alarm 661	10	Dynamco remotes	16
Remote Alarm Deluxe P375, P375B, P385	10		
Remote Alarm Elite P775, P775B, P785	10		

24 Volt Systems 17

Touch Key Immobiliser P165/24	17
Transponder Immobiliser (Hands Free) P205/24	17
Deluxe Remote Immobiliser P355/24	17
Remote Alarm Deluxe P375/24, P375B/24, P385/24	17

Turbo Systems 18

Turbo Options	18
---------------	----

Sensors 19

Ultrasonic Sensor ACC-001	19
Microwave Sensor ACC-003	19
Dual Zone Microwave Sensor ACC-004	19
Shock Sensor SEN-002	19
Dual Stage Fuzzy Logic Shock Sensor SEN-006	19
Tilt and Shock Sensor SEN-009	19
Glass Breakage Sensor GBS-4XR	19

Sirens 20

Battery Backup Siren (Australian Standards) SIR-001	20
Standard Siren SIR-003	20
Mini Battery Backup Siren SIR-004	20
Battery Backup Siren (Soft Chirp) SIR-009	20

Accessories 21

Electric Window Closer WIN-004	21
Garage Door Controller G-DOOR	21
SMS Pager	21
Dual Connector for using multiple sensors Y-CONNECTOR	21
Indicator Flasher Kit Remote Immobiliser INDKIT	21
Voltage Converter 24-12 Volts CONVERTER	21
Siren Barrel (SIR-001 and SIR-009) SIR-002	22
Siren Barrel (SIR-004) SIR-008	22
Bonnet Switch SWI-001	22
Euro Pin Switch SWI-002	22
Sliding Door Switch SWI-004	22
Socket for Touch Key Immobiliser TKS-001	22
30 AMP Relay with Socket REL-002	22
Window LED (Red 2 wire) LED-001	23
Window LED (Blue) LED-006	23
Transmitter Battery 23A BATTERIES-001	23
Transmitter Battery 27A BATTERIES-002	23
Boot Release Kit BOOT	23
P355/P375/P375B/P385 Harness HARNESS-3	23
P165 Harness HARNESS-4	23
P275 Harness HARNESS-6	24
KE-CLR-11 Harness HARNESS-9	24
P755/P775/P775B/P785 Harness HARNESS-10	24
P205 Harness HARNESS-11	24
661 Harness HARNESS-12	24
P485 Harness HARNESS-13	24
P455 Black Wire Loom LOOM-2	24

What's New

Wireless RV Alarm

A Revolution in RV Security.

The Dynamco RV Alarm is the World's first genuine RV Alarm system! After years of research and development our engineers have specifically designed and engineered 'from the ground up', a wireless Alarm for RVs and RV owners. Key Features include:

- Extremely easy to use LCD Key Pad or remote FOB for arm/disarm
- Multiple Zones for protection while you sleep
- Unique 2-way wireless technology - false alarm free
- Easy to understand diagnostics
- Lot security and monitoring for the RV Dealer
- Modular system allows the easy addition of wireless sensors to protect trailers and other items
- Anti-blocking transmission technology for added security



Wireless Toolbox Alarm

The Dynamco Toolbox alarm breaks new ground in protection for your tools and truck-bed contents. Traditional locks really don't stop thieves and wired alarm systems are impractical. This truly innovative system can be installed in minutes. Key features include:

- Wireless sensors can be installed in your toolbox or tray-cover in seconds
- The Wireless siren module is a simple 2-wire install in your engine bay
- Includes 2 code-hopping KeyFob remotes
- Long life sensor batteries means low maintenance
- Compatible with Dynamco RV and Wireless Remote Alarms
- Additional sensors can easily be added to the system



Wireless Alarms and Immobilisers

Dynamco is proud to introduce a new range of Wireless Alarms and Immobilisers. As we have extended our reach worldwide through partnership with retail distribution, we have seen strong demand for simple, Easy to Install Alarms and Immobilisers.



CAN Bus

The advantage of a CAN Bus alarm is that it provides a 'plug and play' environment that saves significant installation time and provides a neater, far more integrated solution for these vehicles.

Dynamco's CAN Bus systems are extremely innovative in that all CAN Bus vehicles can be addressed by a single product. The vehicle make and model is simply chosen and the CAN Module programmed automatically for that vehicle. For our customers, this means not having to hold inventory for specific vehicles and also simplifies installation.



SMS Pager

Dynamco's new SMS Pager provides an easy way for you to extend any of our Alarm Systems to include the ability to send an SMS Text message to a mobile phone if any intrusion or trigger is detected. The unit comes with a SIM Card slot allowing you to easily populate it with a prepaid card from your carrier of choice.

Future versions will include the ability to receive SMS's from the owner to allow the system to be disarmed, the vehicle unlocked etc.



GPS Tracking

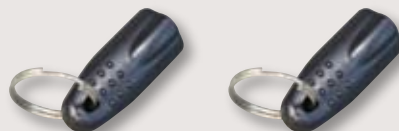
Dynamco will shortly be introducing a GPS tracking module to complement our range of vehicle alarms and immobilisers. The GPS tracking module allows the alarm, when triggered to wirelessly send the vehicle's position to a server that in turn can display the position on a map via the Internet. Dynamcos' strategy is to partner with vehicle tracking service providers to provide this element of the solution.



Immobilisers

Touch Key Immobiliser P165

- Two uniquely coded Touch Keys.
- Flashing light on the dash.
- Two points of immobilisation.
- Australian Standard AS4601 compliant.
- 2 year manufacturer's warranty.
- 24 Volt version available.
- Optional 3rd circuit of immobilisation available.
- Automatically immobilises after 40 seconds.



Transponder Immobiliser (Hands Free) P205

- Two uniquely coded Transponder Tags.
- Flashing light on the dash.
- Two points of immobilisation.
- Australian Standard AS4601 compliant.
- 2 year manufacturer's warranty.
- 24 Volt version available.
- Optional 3rd circuit of immobilisation available.
- Automatically immobilises after 40 seconds.



Remote Immobiliser P275

- Two code hopping remote transmitters.
- Central Locking integration.
- Flashing light on the dash.
- Two points of immobilisation.
- Automatically immobilises after 40 seconds.
- Australian Standard AS4601 compliant.
- Emergency PIN override.
- 2 year manufacturer's warranty.
- Optional indicator flash on arm and disarm (INDKIT).
- Optional window LED.



Deluxe Remote Immobiliser P355

- Two code hopping remote transmitters.
- Central locking integration.
- Flashing light on the dash.
- Indicator flash on arm and disarm.
- Two points of immobilisation.
- Automatically immobilises after 40 seconds.
- Emergency PIN override.
- Australian Standards AS4601 compliant.
- Two year manufacturer's warranty.
- Optional Anti-hijack and Auto-Relock features.
- Fully upgradeable to an alarm system.
- 24 Volt version available.
- Optional window LED.



DIY Alarms and Immobilisers

Wireless DIY Alarm X3

The Dynamco Wireless DIY Alarm provides an incredibly easy to install system that still provides solid protection for your vehicle. The wireless siren mounts easily in the engine compartment with the included hardware and requires only 2 wires to be connected to the battery. The siren module includes both shock and voltage-drop sensors. The system is armed and disarmed by the included code-hopping remote controls. One of the highly innovative features of this alarm is the ability to easily add optional wireless sensors including air-pressure, glass breakage and the like. See below for more details on the current range of wireless sensors.



NoStart Relay NO-START-002

Dynamco will shortly be introducing our highly successful, patented range of NoStart Relay Immobilisers to Australia. These tiny relays simply replace the vehicle's existing starter motor or fuel-pump relay with a self-contained wireless immobiliser that can be disarmed by one of our active or passive remotes.



DIY Touch Key Immobiliser P120

The P120 is an easy to install, do-it-yourself immobiliser. It includes a dashboard mounted Touchkey socket with LED and 2 digital touchkeys. It allows you to easily provide engine immobilisation including auto-arming and the kit includes warning stickers.



Wireless Sensors

Dynamco's "Wireless DIY Alarm" can be extended by adding one or more of our Wireless Sensors. In future, these sensors will be integrated into other products in the Dynamco range.

Air Pressure Sensor SEN-AS

The Air Pressure sensor is part of Dynamco's new family of wireless sensors. This module senses any change in air pressure within the vehicle using low-frequency sound pressure waves and when triggered sends a wireless message to the main siren module to trigger the alarm. The sensor module has a side adjustment screw that allows you to adjust the sensor to more specifically suit your vehicle.



Glass Breakage Sensor SEN-GS

- Built-in electret microphone picks up sound from inside vehicle.
- Filters everything except the high frequencies associated with smashing glass.
- Triggers if the noise exceeds the set level.



Sensor Bridge SEN-SB

The Sensor Bridge is a wireless transmitter that instantly transforms any of Dynamco's existing range of wired sensors into a wireless sensor. You simply plug in any of our wired sensors, supply the module with power and the system can then be programmed into the main wireless siren module.



Alarms

Remote Alarm 661

- Two uniquely coded remote control transmitters.
- Monitors doors, bonnet and boot.
- Detects shocks to the car.
- Central Locking integration.
- Flashing light on the dash.
- Emergency PIN override.
- Standard siren.
- Indicator flash on arm and disarm.
- Two year manufacturer's warranty.



Remote Alarm Deluxe P375, P375B, P385

- Two code hopping remote transmitters.
- Monitors doors, bonnet and boot.
- Detects glass breaking.
- Central locking integration.
- Flashing light on dash.
- Two points of immobilisation.
- Emergency PIN override.
- Battery backup siren.
- Australian Standard AS3749 compliant.
- Two year manufacturer's warranty.
- Optional electric window closer.
- Optional window LED.
- Diagnostic reporting.
- Siren options: SIR-003 = P375, SIR-004 = P375B, SIR-001 = P385.



Remote Alarm Elite P775, P775B, P785

- Inbuilt intelligent auto transponder disarm.
- Includes all features of 'Remote Alarm Deluxe' shown above.
- Multi Australian Standards approved immobiliser alarm provides two circuits of engine immobilisation operated by rolling code random encrypted remote control.
- Entry point protection of doors, boot and bonnet with an intelligent glass break sensor.
- Audible warning is achieved via an intelligent soft-tone control Australian Standards 115dB battery back up siren. Visual deterrents include vehicle indicators, high intensity blue LED's that can be either dash or windscreen mounted.
- The system has diagnostic reporting and can provide keyless entry.
- Blue window mounted LED.
- Soft siren chirper for arm/disarm.
- Siren options: SIR-003 = P775, SIR-004 = P775B, SIR-009 = P785.



Upgrade Alarms

Factory Upgrade Alarm P485

- Uses vehicle's factory supplied remote transmitters.
- Monitors doors, bonnet and boot.
- Detects breaking glass.
- Flashing light on the dash.
- Indicators flash on arm/disarm.
- Emergency PIN override.
- Battery Backup Siren.
- Australian Standards AS3749 compliant.
- Two year manufacturer's warranty.
- Onboard trigger diagnostics.
- Optional electric window closer.
- Optional window LED.



Mini Upgrade P180

The P180 is an upgrade for vehicles that have a simple door/bonnet triggered factory alarm system that sounds the horn when triggered. The upgrade allows more sophisticated sensors, such as microwave, ultrasonic, tilt, glass breakage, etc. to be added, and provides a siren output trigger.

In addition, it has a diagnostics feature to show the exact cause of the last trigger, and an LED deterrent/warning light.



CAN Bus Upgrade

CAN Bus stands for Controller Area Network bus. Introduced by Bosch in 1986 for in-vehicle networks, it replaces bulky wiring harnesses with a two-wire cable and is fast becoming an industry standard.

The advantage of a CAN Bus alarm is that it can easily be connected to the 2-wire bus in these vehicles and automatically senses doors, bonnet, boot and other sensors alleviating the need to wire these. This provides a 'plug and play' environment that saves significant installation time and provides a neater, far more integrated solution for these vehicles.

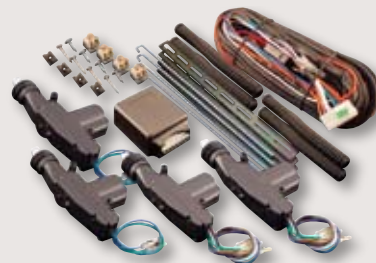
Dynamco's CAN Bus systems are extremely innovative in that all CAN Bus vehicles can be addressed by a single product. The vehicle make and model is simply chosen and the CAN Module programmed automatically for that vehicle. For our customers, this means not having to hold inventory for specific vehicles and also simplifies installation.



Central Locking

Standard Central Locking Kit 4CL-001

- Two master actuators.
- Two slave actuators.
- Central timing controller unit.
- Complete wiring set for standard four door car.
- Four sets of brackets, screws, rubber tubing and knuckles.
- Screws for knuckles.
- 1 door kits available 1CL-001.
- Motors also sold separately – 2 wire ACTSLA
– 5 wire ACTMAS.



Remote Central Locking Kit 4CL-002

- Two code hopping remote transmitters.
- Two master actuators.
- Two slave actuators.
- Central timing controller unit.
- Complete wiring set for standard four door car.
- Four sets of brackets, screws, rubber tubing and knuckles.
- Screws for knuckles.
- Motors also sold separately – 2 wire ACTSLA
– 5 wire ACTMAS.



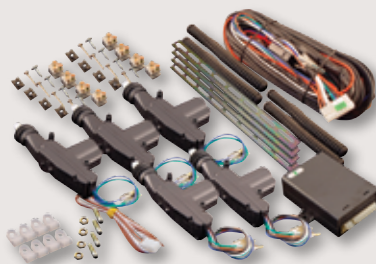
Keyless Entry Kit KE-CLR-TX90

- Two code hopping remote transmitters.
- Flashing light on the dash.
- Central timing controller unit.
- Compatible with all factory central locking.
- Anti hijack option.
- Auto relock option.
- Variable pulse time.
- Lock unlock confirmation.



Toyota 100 Series Central Locking Kit 4CL-004

- Two master actuators.
- Three slave actuators.
- Central timing controller unit.
- Stainless steel rods, cable locks, P-clamps.
- Five sets of brackets, screws and rubber tuning.
- Complete wiring for a standard four door car (8m extra of 4mm cable is required if the 5th actuator is to be mounted in the tail door).
- Also available with remote controls.
- 2mm Hex key for knuckles.



Reversing Systems

Reversing Sensor Kit (Display) SEN-003/4

- 4 Ultrasonic bumper mounted heads.
- Audible feedback to driver.
- Digital readout of distance to object.
- Bargraph readout to show which side of car is closest to obstacle.
- Automatically activates when reverse gear is selected.
- Optional trailer disable module.
- Audible on/off switch.
- Plug-in sensor connectors for easy replacement.



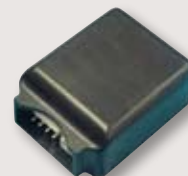
Reversing Sensor Kit (Buzzer) SEN-010

- 4 Ultrasonic bumper mounted heads.
- Piezo buzzer informs driver of danger.
- Audible feedback to driver.
- Automatically activates when reverse gear is selected.
- Optional trailer disable module.
- Audible on/off switch.



Trailer Sensor SEN-012

- Module constantly monitors the trailer socket of the vehicle.
- If a trailer is plugged into the socket at any time before, during or after the reverse gear is selected, the SEN-012 will disable the reversing sensor until reverse gear is de-selected.
- Even if the trailer is momentarily unplugged while reverse gear is engaged, the sensor will remain disabled.



Reversing Screen SCR-001

- 3.5" colour TFT LCD screen.
- Goose-neck swivel mounting bracket.
- CCFT back-light for night viewing.
- Two channels to allow for reversing and in-car DVD.
- Both NTSC and PAL decoding.



Reversing Screen SCR-002

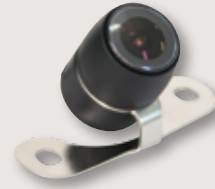
- 6" colour TFT LCD wide-screen (16:9).
- Mounts easily over existing rear view mirror.
- CCFT back-light for night viewing.
- Two channels to allow for reversing and in-car DVD.
- Supports both NTSC and PAL.
- Remote control for all functions.



Reversing Systems (cont)

Reversing Camera CAM-001

- 1/4" CMOS optical sensor for high quality video.
- Full colour PAL system.
- Bracket mounted.
- RCA connections.
- Water resistant.



Reversing Camera CAM-003

- 1/4" CCD optical sensor.
- Full colour PAL system.
- 165 degree viewing angle.
- Bracket mounted.
- RCA connections.
- Water resistant.



Reversing Camera CAM-004

- 1/3" CMOS optical sensor.
- 130 degree viewing angle.
- Full colour PAL system.
- Flush/Bumper mounted.
- RCA connections.
- IP67 rated water resistant.



Remote Controls – Current

Touch Key TOUKEY

- Suitable for P165 and P120 immobilisers.
- Requires no batteries.
- Additional colours available on request.



Transponder TRAKEY

- Suitable for P205 immobiliser.
- No battery required.
- Completely waterproof.



TX101 Remote (single button) REM-101

- Each transmission generates a completely new and pseudo random identification code. Each code is only ever used once.
- High intensity surface mount LED.
- Uses CR2016 3 volt 80mAH Lithium batteries.



TX111 Remote (two button) REM-111

- Each transmission generates a completely new and pseudo random identification code. Each code is only ever used once.
- High intensity surface mount LED.
- Uses CR2016 3 volt 80mAH Lithium batteries.



TX90 REM-090T

- Each transmission generates a completely new and pseudo random identification code. Each code is only ever used once.
- Includes transponder inside remote for automatic disarm.
- High intensity blue LED.
- Uses CR2016 3 volt 80mAH Lithium batteries.



TX74A REM-074

- Three button remote control suitable only for 661-3.
- High intensity surface mount green LED.
- Uses CR2016 3 volt 80mAH Lithium batteries.



TX90 REM-090

- Each transmission generates a completely new and pseudo random identification code. Each code is only ever used once.
- Uses CR2016 3 volt 80mAH Lithium batteries.



See overleaf for remote to system compatibility.

Dynamco remotes

Model #	Compatible System	433 MHz	304 MHz	Code Hoping	Fixed Code	27A Battery	23A Battery	CR-2016 Lithium	Compatible Remote	Led Colour
 REM-111	P355-P385	✓		✓				✓		
 REM-101	P275	✓		✓				✓		
 REM-090T	P755-785	✓		✓				✓		
 REM-090	KE-CLR-TX90	✓		✓				✓		None
 REM-074	661-3	✓			✓		✓			
 REM-009	P300 & P500		✓	✓		✓				
 REM-003	2XR		✓		✓	✓				
 REM-071	D355/D385	✓		✓				✓		
 REM-021	661		✓		✓		✓			
Discontinued remotes										
 REM-015	P355-P385	✓		✓		✓			 REM-111	
 REM-008	P275	✓		✓		✓			 REM-101	
Limited supply available										
 REM-005	P300/P400		✓	✓			✓		 REM-009	
 REM-006	2XR		✓		✓		✓		 REM-003	
 REM-018	P775-P785	✓		✓		✓			 REM-090T	

24 Volt Systems

Touch Key Immobiliser P165/24

- Two uniquely coded Touch Keys.
- Flashing light on the dash.
- Two points of immobilisation.
- Australian Standard AS4601 compliant.
- 2 year manufacturer's warranty.
- Automatically immobilises after 40 seconds.



Transponder Immobiliser (Hands Free) P205/24

- Two uniquely coded Transponder Tags.
- Flashing light on the dash.
- Two points of immobilisation.
- Australian Standard AS4601 compliant.
- 2 year manufacturer's warranty.
- Automatically immobilises after 40 seconds.
- Optional 3rd circuit of immobilisation available.



Deluxe Remote Immobiliser P355/24

- Two code hopping remote transmitters.
- Central locking integration.
- Flashing light on the dash.
- Indicator flash on arm and disarm.
- Two points of immobilisation.
- Automatically immobilises after 40 seconds.
- Emergency PIN override.
- Australian Standards AS4601 compliant.
- Two year manufacturer's warranty.
- Optional Anti-hijack and Auto-Relock features.
- Fully upgradeable to an alarm system.



Remote Alarm Deluxe P375/24, P375B/24, P385/24

- Two code hopping remote transmitters.
- Monitors doors, bonnet and boot.
- Detects glass breaking.
- Central locking integration.
- Flashing light on dash.
- Two points of immobilisation.
- Emergency PIN override.
- Battery backup siren.
- Australian Standard AS3749 compliant.
- Two year manufacturer's warranty.
- Optional electric window closer.
- Siren options: SIR-003 = P375/24, SIR-004 = P375B/24, SIR-001 = P385/24.



Turbo Systems

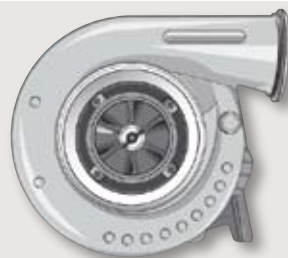
Turbo Options

For turbocharged vehicles, the installation of a turbo-timer enhances the life of the turbo by allowing the engine to idle and continue to supply the turbocharger with oil as it spins down from the potentially high rpm whilst in use.

The Deluxe and Elite versions of Dynamco's Remote Alarm have the facility to either:

- Integrate with an existing turbo-timer to prevent auto-arming whilst the engine is still running or;
- To provide turbo-timer functionality, where one of the alarm outputs includes a timer that can be used to keep the engine idling for a certain period of time after the ignition is turned off.

Please discuss your specific requirements with your local Dynamco distributor.



Disclaimer: Please note that for safety reasons, in some States of Australia and in some Countries, the installation and/or use of a turbo-timer is illegal. Please check with your State authority to ensure compliance with all laws before purchasing an alarm with these options. Furthermore, please ensure correct installation and use as leaving the engine running in a vehicle can create a significant safety hazard to occupants, external parties or property. For the aforementioned reasons, Dynamco will not accept any liability for any damage to persons or property as a result of the installation and use of such a turbo-timer system.

Sensors

Ultrasonic Sensor ACC-001

- Fills cabin of car with an ultrasonic sound field, triggers if the echo changes.
- Will not false alarm due to exposed metal surfaces.
- Ultrasonic field will not penetrate through glass to false alarm due to external moving objects.



Microwave Sensor ACC-003

- Detects changes in the content density of the car.
- Penetrates soft objects like seats.
- Adjustable field strength.
- Will not false alarm if objects already inside microwave field move.



Dual Zone Microwave Sensor ACC-004

- Movement detector.
- Interior and exterior zones.
- Completely hidden installation.
- Plug-in for Dynamco alarms.



Shock Sensor SEN-002

- Detects vibration and impact upon the vehicle.
- Can protect wheels as breaking wheel-nut thread cause shock.
- Detects breaking glass.
- A passive sensor, so power consumption is very low.



Dual Stage Fuzzy Logic Shock Sensor SEN-006

- Vibration detector.
- Two trigger intensity levels.
- Completely hidden installation.
- Plug-in for Dynamco alarms.



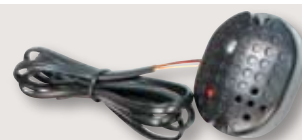
Tilt and Shock Sensor SEN-009

- Measures real-time attitude of the car with respect to the earth.
- Protects wheels by detecting change in car's angle when air is release from a tyre.
- Detects unauthorised attempt to towing car away.
- A passive sensor, so power consumption is very low.



Glass Breakage Sensor GBS-4XR

- Built-in electret microphone picks up sound from inside vehicle.
- Filtering everything except the high frequencies associated with smashing glass.
- Triggers if the noise exceeds the set level



Sirens

Battery Backup Siren (Australian Standards) SIR-001

- Tested to Australian Standards AS/NZS3749.1:1997 and AS/NZS3749.1:2003.
- Siren will continue to sound if power is disconnected.



Standard Siren SIR-003

- Two wire operation.
- Sound Pressure Level no less than 90dB and no greater than 115db @ 1 metre (as per AS3749.1:2003 section 2.2.6.2c).



Mini Battery Backup Siren SIR-004

- Small case.
- Negative trigger.
- Security key to switch sound off for service.
- Sound Pressure Level no less than 90dB and no greater than 115db @ 1 metre (as per AS3749.1:2003 section 2.2.6.2c).
- Siren will continue to sound if power is disconnected.



Battery Backup Siren (Soft Chirp) SIR-009

- Tested to Australian Standards AS/NZS3749.1:1997 and AS/NZS3749.1:2003.
- Siren will continue to sound if power is disconnected.
- Negative trigger.
- Internal battery status signal.
- Security key to switch sound off for service.
- Sound Pressure Level no less than 90dB and no greater than 115db @ 1 metre (as per AS3749.1:2003 section 2.2.6.2c).



Accessories

Electric Window Closer WIN-004

- Integrate your electric windows with your central locking and alarm/immobiliser.
- Optional connections allow for 4 roll up, or 2 roll up/down.
- Compatible with all Dynamco remote control systems.
- Variable power output to cater for old and new cars.
- Short circuit protected.
- Two year manufacturer's warranty.



Garage Door Controller G-DOOR

- Control your garage door with your Dynamco remote.
- Easy to install.
- Simply connect 2 wires to existing garage controller.
- Comes with power supply.
- Up to 10 different remotes can be linked.



SMS Pager

Dynamco's new SMS Pager provides an easy way for you to extend any of our Alarm Systems to include the ability to send an SMS Text message to a mobile phone if any intrusion or trigger is detected. The unit comes with a SIM Card slot allowing you to easily populate it with a prepaid card from your carrier of choice.

Future versions will include the ability to receive SMS's from the owner to allow the system to be disarmed, the vehicle unlocked etc.



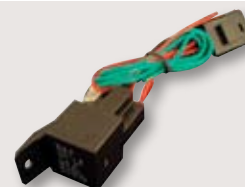
Dual Connector for using multiple sensors Y-CONNECTOR

- For compatibility with older versions.
- This dual connector cable allows you to connect two of Dynamco's alarm sensors via a single cable.



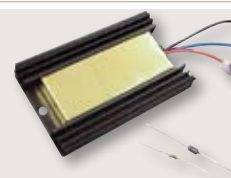
Indicator Flasher Kit Remote Immobiliser INDKIT

- Enhancement for Dynamco's Remote Immobiliser (P275).
- Allows indicators to be automatically flashed.
- Includes one relay, 15A fuse, diodes and spade terminal.



Voltage Converter 24-12 Volts CONVERTER

- Converts +24V to +12V at 1 amp continuous (2.2amp surge).
- Includes 1N4004 1A 400V power diode and 1K 1/4W resistor.



Accessories (cont)

Siren Barrel (SIR-001 and SIR-009) SIR-002

- Siren lock and key set.
- 2 and 4 terminal version suit SIR-001 and SIR-009.



Siren Barrel (SIR-004) SIR-008

- Siren lock and key set.
- 4 terminal version suit SIR-004 backup sirens.



Bonnet Switch SWI-001

- Pin switch ideal for protecting bonnet or boot.
- Switches connected wire to chassis.



Euro Pin Switch SWI-002

- Euro-switch ideal for protecting doors, bonnet or boot.
- Switches connected wire to chassis.



Sliding Door Switch SWI-004

- Contact set for van sliding doors.
- Used to pass current to the actuator in the sliding door, while door is shut.



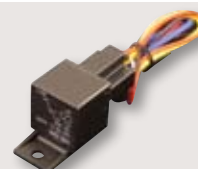
Socket for Touch Key Immobiliser TKS-001

- Two pin Touch Key receptacle.
- Suits P160, P165 and P120.



30 AMP Relay with Socket REL-002

- General purpose 30 amp change-over relay.
- Provides both normally open and normally closed contacts.



Accessories (cont)

Window LED (Red 2 wire) LED-001

- Two wire window unit with red LED.
- Suitable for replacing standard LED in any Dynamco system.



Window LED (Blue) LED-006

- Two wire window unit with super bright blue LED.
- Suitable for replacing standard LED in any Dynamco system.



Transmitter Battery 23A BATTERIES-001

- 23a 12V 38mAh alkaline battery.
- Dia: 10mm.
- Height: 28mm.



Transmitter Battery 27A BATTERIES-002

- 27a 12V 18mAh alkaline battery.
- Dia: 7.7mm.
- Height: 28mm.



Boot Release Kit BOOT

- Uses negative boot release signals from a remote alarms / immobilisers to mechanically release the spring loaded lock mechanism of a car boot lock.
- Operating voltage +9VDC to +18VDC.
- Suits P355, P375, P375B, P385, P755, P775, P775B, P785, KE-CLR-TX90.



P355/P375/P375B/P385 Harness HARNESS-3

- Main power loom.
- Suits P350 units, P355, P375, P375B, P385, P755, P775 and P785.
- Change part number to Harness 010 for blue LED.
- Immobilisation wires included.



P165 Harness HARNESS-4

- Main power loom.
- Suits P140, P145, P160 and P165.
- Immobilisation wires included.



Accessories (cont)

P275 Harness HARNESS-6

- LED, main power loom and immobilisation loom.
- Suits P275.
- Immobilisation wires included.



KE-CLR-11 Harness HARNESS-9

- Main power loom.
- Suits KE-CLR-TX90.



P755/P775/P775B/P785 Harness HARNESS-10

- Power Harness.
- Suits 3 series and 7 series alarms.
- Immobilisation wires included.



P205 Harness HARNESS-11

- Power Harness.
- Suits Transponder Immobiliser.
- Immobilisation wires included.



661 Harness HARNESS-12

- Power Harness.
- Suits Remote Alarm (661 series).



P485 Harness HARNESS-13

- Power Harness.
- Suits Upgrade Alarm (485 series).

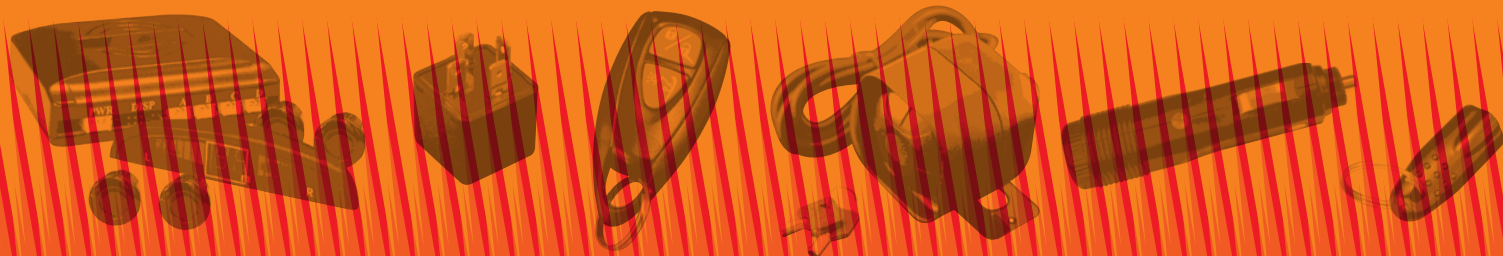


P455 Black Wire Loom LOOM-2

- Main power loom.
- Suits P450 and P455.



Notes



21st Edition – Issue 9

DYNAMCO PTY LTD

innovative vehicle solutions

10 Brown Street, East Perth
Western Australia 6004

† +61 (0)8 922 12345

f +61 (0)8 922 12348

w www.dynamco.com.au

☎ 1300 368 882

